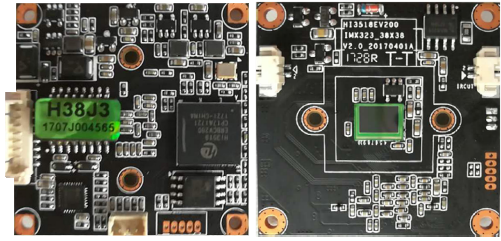


2 Megapixel 38 modules TH38J3

Specially designed for HD IPC, easy to install various housing, integrated switching optical filter, image sensor, encoding and transmission. Free client software support for record, preview, playback and Seetong cloud and mobile monitor. Embedded NVR for high stable requirement system. Open SDK support for industry customer’s secondary development. Support various network modes:

- IPC ----- NVR ----- Seetong Cloud-----Seetong Client
- IPC ----- NVR ----- Seetong Client
- IPC ----- Seetong Client
- IPC ----- NVR ----- Seetong Cloud-----Seetong APP



SONY 2MP,stellar,low illumination and power consumption and code stream.global communication,3D noise reduction, H.264+

Order	Specification	TH38J3 2M Stellar 38 module
1	System Structure	Embedded RTOS design, dual-core 32-bit DSP(Hi3518EV200),pure hardware compression,Watchdog,8MB FLASH,64MB built-in DDR2;
2	Sensor	SONY 2MP 1/2.9" CMOS(IMX323),0.001Lux@F1.2(color),0Lux(IR ON);integrate IR-CUT drive, support linkage control between sensor &IR-CUT& photosensitive& LED fill light, support day/night switch,IR-CUT(20mm) and lens mount optional(CS/M12);
3	Video Process	H.264 video coding, support dual stream, AVI format; code stream200k~5000k bps adjustable,low bit rate,support PAL and NTSC.
4	Frame Rate	2MP @16 frames, support 9~16 FPS adjustable
5	Image Output	Main stream:1920×1080,1280×960,1280×720;
		Code stream:800×448,640×480,640×360,352×288;
6	Audio Interface	1 channel input optional, level 2Vp-p,impedance:1kΩ,support pickup input;1channel output,impedance:16Ω,30mw output power, support headset and amplifier;
7	Audio Process	G.711 CODE standard, support dual voice talkback and audio and video synchronization
8	Network Interface	1*RJ45 Ethernet interface,10/100M self-adaption,8KV anti-static electric capacity; support RTSP/DHCP/NTP/ONVIF/P2P ,GB/T28181 and so on network protocols;
9	LED Passive Interface	1* IR LED control input interface,1*IRCUT interface, support linkage control between IR-CUT and image.
10	Optional Function	E(POE cable power supply),WIFI or UART.
11	Business Function	configure by WEB, OSD(on screen display),real-time video transmission, motion detection; support remote surveillance client software(Seetong);support mobile monitoring(Iphone, Android),support "Seetong" cloud service;
12	Others	DC12V power input interface,900mW power consumption, front end power input, light protection,anti-static,anti-inverse connect, support 18V turn off voltage protection; size :38×38×11mm, net weight 8g,38 size single structure

Remark: 5 megapixel=2592×1944 or 2592×1920,4 megapixel=2688×1512 or 2560×1440,3 megapixel=2048×1536 or 2048×1520 or 2304×1296, 2 megapixel=1920×1080 or 1600×1200, 1.3 megapixel=1280×960, 1 megapixel=1280×720;