

2 Megapixel 38 modules TH38E6

Specially designed for HD IPC, easy to install various housing, integrated switching optical filter, image sensor, encoding and transmission. Free client software support for record, preview, playback and Seetong cloud and mobile monitor. Embedded NVR for high stable requirement system. Open SDK support for industry customer's secondary development.

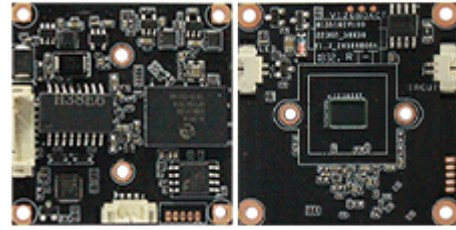
Support various network modes:

IPC ----- NVR ----- Seetong Cloud-----Seetong Client

IPC ----- NVR ----- Seetong Client

IPC ----- Seetong Client

IPC ----- NVR ----- Seetong Cloud-----Seetong APP



38 single board, 2MP, perfect and power consumption and code stream, full netcom, H.265+

Order	Specification	TH38E6 2MP 38 module
1	System Structure	Embedded RTOS design, dual core 32 bits DSP(Hi3516EV100), pure hardware compression, watchdog, 8MB FLASH, 64MB built in DDR;
2	Sensor	2MP CMOS(SC2236), color 1.0Lux@F1.2, B/W 0.1 Lux@F1.2; integrate IR-CUT drive, support linkage control between sensor & IR-CUT & photosensitive & LED fill light, support day/night switch;
3	Video Process	H.265+/H.265/H.264 video coding, support dual stream, AVI format; code stream 200~8000kpbs adjustable; support PAL and NTSC
4	Frame Rates	2MP @20FPS, support 7~20 FPS adjustable
5	Image Output	Main stream: 1920×1080, 1280×960, 1280×720; Sub stream: 800×448, 640×480, 640×360, 352×288;
6	Audio interface	1 channel input, support mic or pickup input; 1 channel output, support headset or amplifier play
7	Audio Process	G.711 CODEC standard, support dual voice talkback, audio and video synchronization;
8	Network Interface	1* RJ45 Ethernet interface, 10/100M self-adaption, 8KV anti-static electric capacity; support RTSP/DHCP/NTP/ONVIF, GB/T28181 and so on network protocols;
9	LED Passive Interface	1* IR LED control input interface, 1* IRCUT interface, support linkage control between IR-CUT and image.
10	Mine-protected	Power supply, network comprehensive lightning protection, through the ITU-T, K.21-2008, IEC61000-4-2/IEC61000-4-5 and other lightning protection standards testing
11	Business Functions	Configure by WEB, OSD(on screen display), real-time video transmission, motion detection and IO alarm linkage, center prompt and picture pop-up after IO alarm; support remote surveillance client software(Seetong); support mobile monitoring(iPhone, Android), support "Seetong" cloud service.
12	Power Supply	DC12V power input interface, 1115mW power consumption, front end power input, light protection, anti-static, anti-inverse connect, support 18V turn off voltage protection;
13	Size and weight	size :38×38×11mm, net weight 8g, without housing PCBA, 38 size single structure;
14	Work Conditions	-20°C ~ +55°C
15	Optional Functions	E(POE cable power supply).

Remark: 5 megapixel ≈ 2592×1944 or 2592×1920, 4 megapixel ≈ 2688×1512 or 2560×1440, 3 megapixel ≈ 2048×1536 or 2048×1520 or 2304×1296, 2 megapixel ≈ 1920×1080 or 1600×1200, 1.3 megapixel ≈ 1280×960, 1 megapixel ≈ 1280×720;