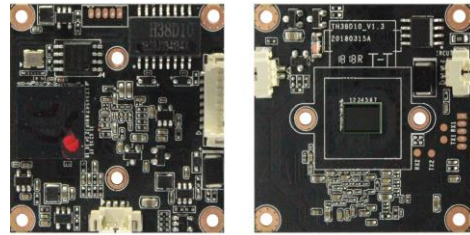


### 3 Megapixel 38 modules TH38D10

Specially designed for HD IPC, easy to install various housing, integrated switching optical filter, image sensor, encoding and transmission. Free client software support for record, preview, playback and Seetong cloud and mobile monitor. Embedded NVR for high stable requirement system. Open SDK support for industry customer's secondary development. Support various network modes:



- IPC ----- NVR ----- Seetong Cloud-----Seetong Client
- IPC ----- NVR ----- Seetong Client
- IPC ----- Seetong Client
- IPC ----- NVR ----- Seetong Cloud-----Seetong APP

3MP,low power consumption.full netcom, H.265+

Order	Specification	TH38D10 3MP 38 module
1	System Structure	Embedded RTOS design, dual-core 32-bit DSP(98517),pure hardware compression,Watchdog,8MB FLASH,512M DDR3;
2	Sensor	3MP 1/2.7" CMOS (SC4236),color 1.0Lux@F1.2,B/W 0.1 Lux@F1.2;integrate IR-CUT drive, support linkage control between sensor &IR-CUT& photosensitive& LED fill light, support day/night switch;
3	Video Process	H.265+/H.265/H.264 video coding, support dual stream, AVI format; code stream200k~8000k bps adjustable,low bit rate,support PAL and NTSC.
4	Frame Rate	3MP @20 frames,2MP @25 frames, support 7~25 FPS adjustable;
5	Image Output	Main stream:2304×1296,1920×1080,1280×720;
		Code stream:800×448,640×480,640×360;
6	Audio Interface	1channel input,support mic or pickup input;1channel output, support headset or amplifier play
7	Audio Process	G.711 CODE standard, support dual voice talkback and audio and video synchronization
8	Network Interface	1*RJ45 Ethernet interface,10/100M self-adaption,8KV anti-static electric capacity; support RTSP/DHCP/NTP/ONVIF/P2P,GB/T28181 and so on network protocols.
9	LED Passive Interface	1* Smart infrared control interface,1*IRCUT interface, support linkage control between IR-CUT and image.
10	Optional Function	E(POE cable power supply).
11	Business Function	Configure by WEB, OSD(on screen display),real-time video transmission, motion detection and IO alarm linkage ,center prompt and picture pop-up after IO alarm; support remote surveillance client software(Seetong);support mobile monitoring(Iphone, Android),support "Seetong" cloud service;
12	Others	DC12V power input interface,915mW power consumption, front end power input, light protection,anti-static,anti-inverse connect, support 18V turn off voltage protection; size :38×38×11mm, net weight 8g,38 size single structure

Remark: 5 megapixel=2592×1944 or 2592×1920,4 megapixel=2688×1512 or 2560×1440,3 megapixel=2048×1536 or 2048×1520 or 2304×1296, 2 megapixel=1920×1080 or 1600×1200, 1.3 megapixel=1280×960, 1 megapixel=1280×720;