

5 Megapixel 38 modules TH38M8

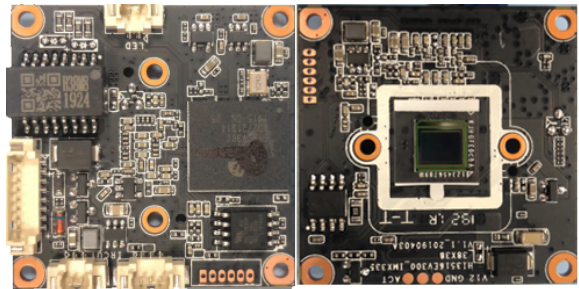
Specially designed for HD IPC, easy to install various housing, integrated switching optical filter, image sensor, encoding and transmission. Free client software support for record, preview, playback and NAT traversal and mobile monitor. Embedded NVR for high stable requirement system. Open SDK support for industry customer's secondary development. Support various network modes:

IPC ----- NVR ----- Seetong Cloud-----Seetong Client

IPC ----- NVR ----- Seetong Client

IPC ----- Seetong Client

IPC ----- NVR ----- Seetong Cloud-----Seetong APP



38 single board, 5MP black light, full netcom, H.265+

Order	Specification	TH38M8 5MP Black light 38 Module
1	System Structure	Embedded RTOS design, dual core; 32 bits DSP (HI3516EV300), pure hardware compression, watch dog, 16MB FLASH, 1Gb DDR3;
2	Sensor	SONY 5MP 1/2.8" CMOS (IMX335), 0.001Lux@F1.2 (color), 0Lux (IR ON); integrate IR-CUT drive, support linkage control between Sensor & IR-CUT & photosensitive & LED fill light, support day/night switch;
3	Video Process	H.265+/H.265/H.264 video coding, support dual stream, AVI format; code stream 500k~8M bps adjustable, support PAL and NTSC
4	Frame Rates	5MP@15 FPS, 4MP@15 FPS; 3MP and below @30FPS
5	Image Output	Main stream: 2592×1944, 2592×1520, 2560×1440, 2048×1520, 2304×1296, 1920×1080;
		Sub stream: 800×448, 720×480, 640×480, 640×360, 480×360, 352×288;
6	Audio Interface	1 channel input, support mic or pickup input; 1 channel output, support headset or amplifier play
7	Audio Process	G.711 CODEC standard, support dual voice talkback, audio and video synchronization
8	Network Interface	1* RJ45 Ethernet interface, 10/100M self-adaption, 8KV anti-static electric capacity; support RTSP/DHCP/NTP/ONVIF/GB/T28181 and so on network protocols
9	LED Passive Interface	1* IR LED control output interface, 1* IRCUT interface, support linkage control between IR-CUT and image.
10	Optional Function	E (POE cable power supply), USB (only support or UART or IO or RS485);
11	Business Functions	Configure by WEB, OSD (on screen display), real-time video transmission, motion detection; support remote surveillance client software (Seetong); support mobile monitoring (Iphone, Android), support "Seetong" cloud service;
12	Others	DC12V power input interface, 1.44W power consumption, front end power input, light protection, anti-static, anti-inverse connect, support 18V turn off voltage protection; size : 38×38×11mm, 7g, without housing PCBA, 38 size single structure

Remark: 5 megapixel ≈ 2592×1944 or 2592×1920, 4 megapixel ≈ 2688×1512 or 2560×1440, 3 megapixel ≈ 2048×1536 or 2048×1520 or 2304×1296, 2 megapixel ≈ 1920×1080 or 1600×1200, 1.3 megapixel ≈ 1280×960, 1 megapixel ≈ 1280×720;